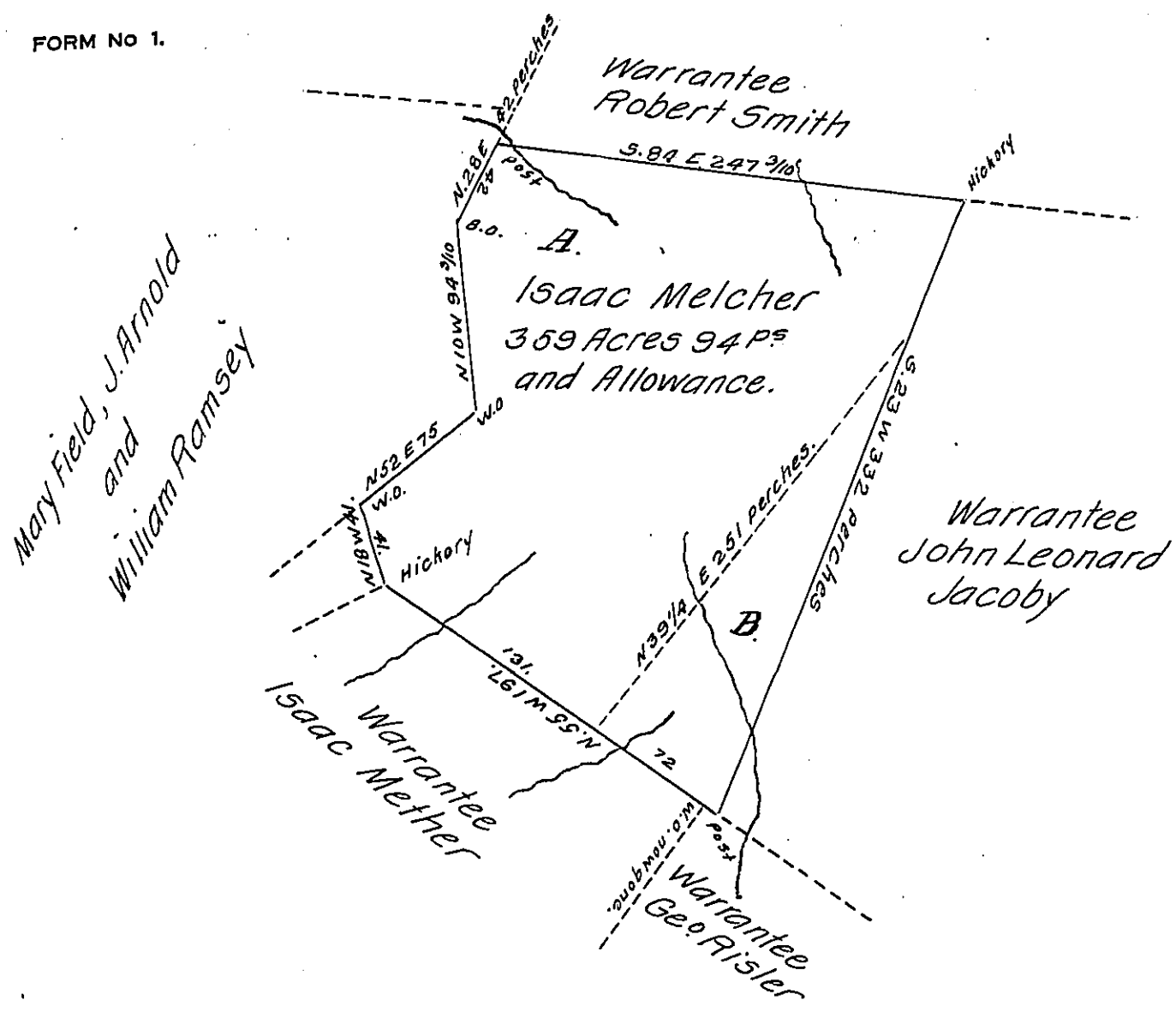


FORM NO 1.



In pursuance of a contract made with the Board of Property dated the 19th of Oct. 1827. I have run and measured some of the lines of the survey of which the situation and boundaries are represented by the above Diagram. and it is the same tract of land which was surveyed to Isaac Melcher on the 25th of Sept. 1776 in pursuance of a Warrant dated the 7th of March 1775 situate in Kittanning township Armstrong county. bounded by lands surveyed to John Leonard Jacoby, George P. Risher, Isaac Mether, Robt. Smith, William Ramsey and others, and contains three hundred and fifty nine acres, ninety four perches and the Allowance of six P. Centum &c.

Jacob Spangler Esquire }
 Surveyor General }

Robert Richard
 D.S.

P.S. According to the papers in this Office. the above described tract of land is one of the Original Surveys of Vandever and Company.

IN TESTIMONY that the above is a copy of the original remaining on file in the Department of Internal Affairs of Pennsylvania, made conformably to an Act of Assembly approved the 16th day of February, 1833, I have hereunto set my Hand and caused the Seal of said Department to be affixed at Harrisburg, this twenty third day of November 1908.

Henry Howells
 Secretary of Internal Affairs.